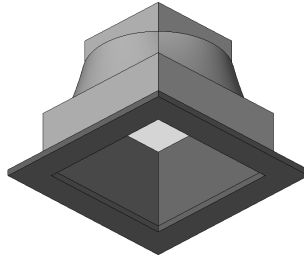


**Revit Family Information**  
**AERA SHALO 2 SQUARE RECESSED -**  
**Deep**



Manufacturer: **LUMENWERX**

File Names: **Lighting-Recessed-Lumenwerx-Aera\_Shalo\_2\_Deep\_Square.rfa**

Family Category: **Lighting Fixtures**

Software: **Revit 2022**

IES: **Available**

Host: **Face \***  
\* Face based (as opposed to ceiling or wall based) components can be recognized in both architectural and engineering revit project files

Pre-loaded Type\*\* : **ASH2SR-SDL-SW-35DEG-90CRI-35K-7W-DEEP TRIM**  
**ASH2SR-SDL-SW-35DEG-90CRI-35K-7W-DEEP TRIMLESS**

Family Type Parameters:

**Link to product page:** Provided

**Link to IES file:** Provided

**Materials & finishes**

**Electrical**

**Photometrics \*\***

\*\*For accurate light calculations, use the related IES files provided in "Link to IES file".